

THE FIRST GIFT

P R O G R A M



15 YEARS
OF SAVING LIVES WITH CORD BLOOD

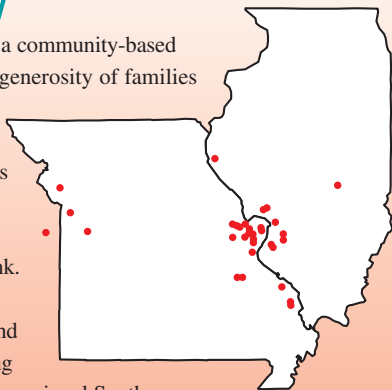
St. Louis Cord Blood Bank

SSM Cardinal Glennon Children's Medical Center
St. Louis University Department of Pediatrics

The First Gift.

Our Community

The First Gift program is a community-based effort that relies on the generosity of families who donate their baby's cord blood, as well as the doctors, midwives, and nurses who volunteer their time and efforts to collect the cord blood for the St. Louis Cord Blood Bank. This includes over 450 doctors and midwives and 1,750 labor and delivery nurses at 29 participating hospitals throughout Eastern Missouri and Southern Illinois. Also, our community has grown to include the Kansas City region.



St. Louis Cord Blood Bank: The First 15 Years

The St. Louis Cord Blood Bank opens for business with three employees under the leadership of Dr. Donna Wall. Left to right: Donna Wall, MD, Kathy Mueckl, RN, Donna Regan, MT (ASCP) SBB, and Mario Alonso, MT (ASCP).



The St. Louis Cord Blood Bank opened its doors in January of 1996 with a staff of just 4 people, a small lab, and one small cryo-storage tank. Today, there are 28 people who manage collections, processing, and cryopreservation, as well as search and export and cord blood research. The small cryo-storage tank has been replaced with 19 giant tanks.

1995

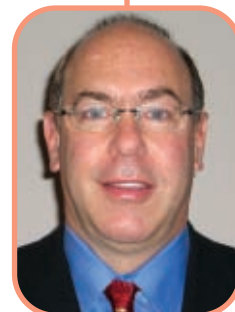
1996

Cord Blood

Cord blood donations are obtained from the blood that remains in the umbilical cord and placenta when a baby is born. It is rich in adult stem cells, similar to those found in bone marrow. These stem cells are used to treat over 70 diseases and disorders such as leukemia, lymphoma, Fanconi's anemia, Wiskott-Aldrich syndrome, aplastic anemia, and sickle anemia.



These photos, taken in October 1995, show the lab area and storage tank. Everything from collections to processing, storage, and export fit into one room.



Dr. David Weinstein, MD is top collector for 1996 and 1997.

First cord blood unit to be banked. Steve and Patty Rapplean donated cord blood when their son Anthony was born January 25, 1996. Theirs was the first unit to be stored for transplant purposes. The cord unit was collected by Dr. Kent Branson, MD at Missouri Baptist Medical Center.

Patty Rapplean poses with her husband Steve and her son Anthony, who is now 15 years old.



1997

First cord blood unit to be used for transplant goes to a one-year-old girl with Congenital Erythropoetic Porphyria. The transplant was performed at SSM Cardinal Glennon Children's Medical Center on Valentine's Day, February 14, 1997.



The staff begins to grow. Back row: Maggie Steffan, Donna Regan and Kathy Mueckl. Front row: Al Chu, Cory Johnson and Mario Alonso. Steffan and Chu are summer interns.

First publication to evaluate the feasibility of a community-based cord blood collection system as a means to enhance the ethnic diversity of a bank: *Feasibility of an Obstetrician-based Cord Blood Collection Network for Unrelated Donor Umbilical Cord Blood Banking*. Journal of Maternal-Fetal Medicine (1997) Nov-Dec; 6(6): 320-3



Dr. Nanci Bucy, DO is top collector.

1998

Lisa Leonard holds the first Poker Run. Her event joins the Ritter family's Fish Fry that started in 1996. Both events are in memory of Anthony Ritter with proceeds going to SSM Cardinal Glennon Children's Medical Center and the St. Louis Cord Blood Bank.



Mike Ritter



Donna Ritter



Lisa Leonard



Dr. Lisa Jabusch, MD is top collector.

2000

1999



The St. Louis Cord Blood Bank is recognized as second largest public cord blood bank in the world.

St. Louis Cord Blood Bank joins the National Marrow Donor Program's network of public cord banks.



BE THE MATCH

Dr. Wall (right) relocates to Texas and Dr. Michael Creer, MD joins the cord blood bank as director.



First publication promoting the use of integral segments to confirm quality characteristics prior to distribution: *Long term cryostorage of UC blood units: ability of the integral segment to confirm both identity and hematopoietic potential.* Cytotherapy (2003) Vol. 5, No. 1, 80–86.



Stem Cell Therapeutic and Research Act signed into law. The Department of Health and Human Services will contract with qualified cord blood banks to help create an inventory of 150,000 of high-quality cord blood to be made available through the C.W. Bill Young Cell Transplant Program. This establishes cord blood as an important source of stem cells.



From left to right are Mario Alonso, manager; Kathy Mueckl, nurse coordinator; Dr. Creer, Director; and Donna Regan, quality manager.

Dr. Douglas Gates, MD is top collector. He has remained the top collector for every year since.



2002

2003

2004

2001



Dr. Kevin Foster, DO is top collector.

Then & Now In 1996 the St. Louis Cord Blood Bank received over 1,000 donations, more than 600 of which were banked. The first cord blood unit was shipped for transplant the following year. In 2010 more than 12,000 donations were received, over 2,600 units were banked, and 188 were shipped for transplant.



The staff at the St. Louis Cord Blood Bank has grown significantly over the last 15 years, from four people to 28.

First publication describing large scale processing and banking since the pioneer article by New York in 1995: *A simple and reliable procedure for cord blood banking, processing and freezing: St. Louis and Ohio Cord Blood Bank Experiences.* Cytotherapy (2001) Vol. 3, No. 6, 429–433.

ed man
od
od
units
able
ation

The 1,000th cord blood unit for transplant ships on October 10th. The unit goes to a 21-year old man with Acute Myelogenous Leukemia. The transplant was performed at Fairview University Medical Center in Minneapolis.



Kris Wassmer and Janet Schaeffler prepare the 1,000th cord blood unit for shipment.



Donna Regan turns over the frozen cord blood unit to the courier, Charlie Turner, to start it on its way.

New processing lab is completed and a new 6,000 gallon liquid nitrogen tank is installed to keep up with the growth of donations and banked units.



Led by William G. Ward, MT (ASCP) DLM, Director of Cellular Therapy Services, the Saint Luke's Cancer Institute, Kansas City, MO, partners with the St. Louis Cord Blood Bank. The Saint Luke's program collects cord blood at four Saint Luke's Health System hospitals, processes it, and forwards it to St. Louis for storage and export.



Beth Corbett, MT, processes a unit of cord blood from a donor in the greater Kansas City area.

2005

Dr. Creer leaves the bank to be replaced by Dr. William Ferguson, MD (left) as bank director and Dr. Brandon Triplett, MD (right) as medical director.

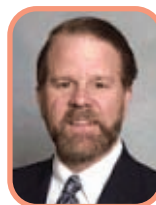


2006

2007

The St. Louis Cord Blood Bank receives a \$1.3M grant from the Health and Human Services Administration to collect, process, store, and make available genetically diverse, quality cord blood units for transplantation.

Thanks, in large part, to the efforts of Rep. Pat Dougherty (right), the cord blood bank receives a \$578,000 grant from the state of Missouri for the purpose of funding operations and for minority donation outreach efforts.



2008

NCBI

The St. Louis Cord Blood Bank becomes part of the National Cord Blood Inventory program. The program's goal is to collect and make available 150,000 units of high-quality cord blood for public use.

Exploring success rates in transplants across ethnic lines: Ethnically Mismatched Cord Blood Transplants in African Americans: The Saint Louis Cord Blood Bank Experience. Cytotherapy (2007) Vol. 9, No. 7, 660-666.

St. Louis Cord Blood Bank receives the *Hands On Healing Award*, SSM Leadership Conference

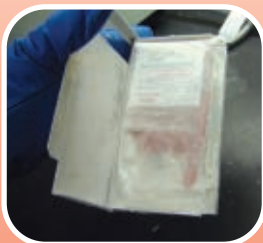
The St. Louis
Cord Blood Bank
is awarded a

HRSA

\$1.4M contract from the Health Resources and Services Administration, to collect and maintain genetically diverse cord blood units, especially those from minority parents.

Developed a standard for thawing cord blood that has been adopted by many other cord blood banks: *Comparison of cord blood thawing methods on cell recovery, potency, and infusion*. *Transfusion* 2010; 50: 2670-2675

A unit of cord blood is removed from its shipping cassette to begin thawing.



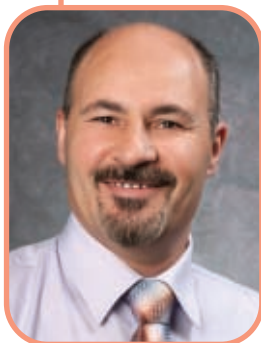
2010



2009



Dr. Triplett leaves and Dr. William Miller, MD joins the bank as Medical Director.



Dr. Salem Akel, PhD joins the bank as Laboratory/Scientific Director. He is charged with the development of a new, basic research laboratory that will advance the scientific agenda of the cord blood bank.

2011



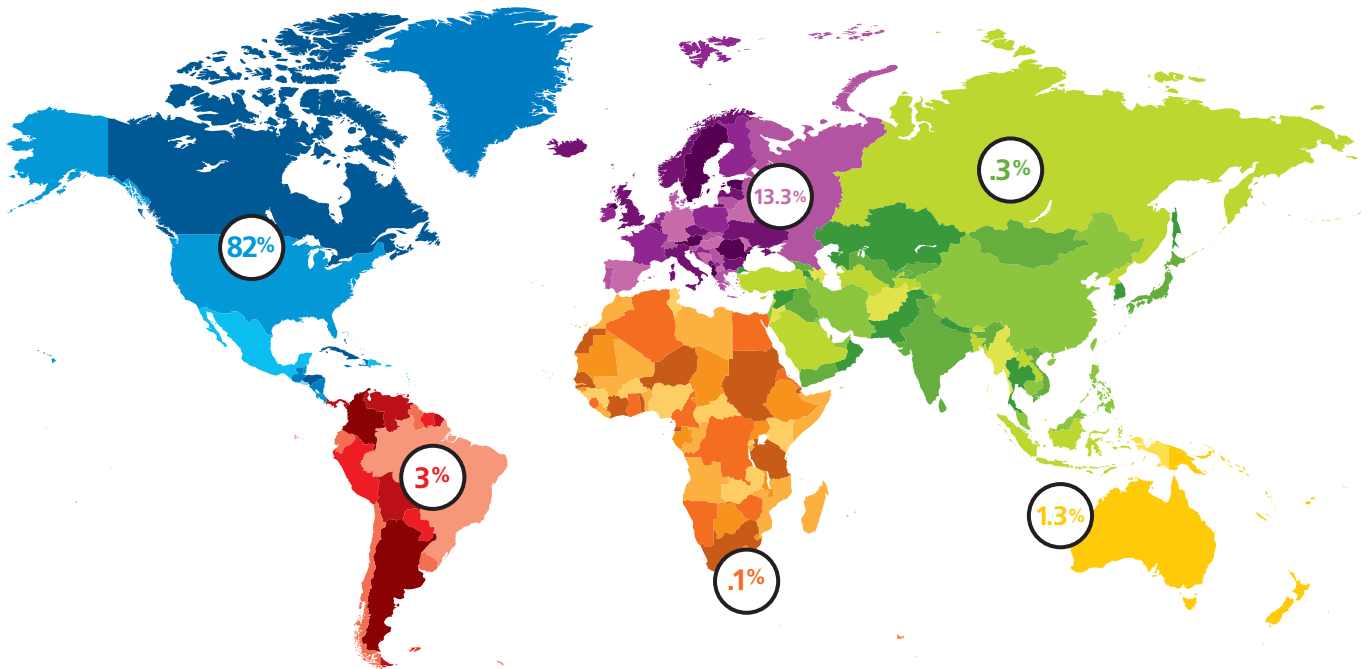
The St. Louis Cord Blood Bank receives three awards:
Leadership in Addressing Healthcare Disparity Award, SSM Leadership Conference
SSM Exceptional Innovation: Team Award
National Children's Cancer Society Humanitarian Legacy Award

The World Community

The First Gift program operates within a 150-mile radius of St. Louis. However, it makes a global footprint, having exported more than 1,850 life-saving cord blood units to 36 American states and 32 countries around the world.

Countries that have Received a Cord Unit from SLCBB

<i>North America</i>	<i>South America</i>	<i>Eastern Europe</i>	<i>Western Europe</i>	<i>Scandinavia</i>	<i>Africa</i>	<i>Middle East</i>	<i>Asia</i>	<i>South Pacific</i>
Canada Mexico United States	Argentina Brazil Chile Columbia	Austria Croatia Germany Greece Hungary Slovenia Turkey	Belgium France Ireland Italy Portugal Spain Switzerland The Netherlands United Kingdom	Denmark Norway Sweden	South Africa	Israel Saudi Arabia	China Singapore	Australia New Zealand



The People-with-Two-Birthdays Club

Patients who receive a cord blood stem cell transplant frequently refer to that date as their second birthday. Here are just a few of the people who have received a cord blood transplant through the St. Louis Cord Blood Bank and SSM Cardinal Glennon Children's Medical Center.



Granton Bayless

Severe Combined
Immune Deficiency



Ronnel Bledsoe

Leukemia



Susan Fister

Leukemia



Amelia Gray

Leukemia



Alexis Hagemeyer

Severe Combined
Immune Deficiency



Jessica Hahn

Myelodysplastic Syndrome



Demi King

Severe Combined
Immune Deficiency



Robin Mesey Jr.

Wiskott-Aldrich Syndrome



Brea Powers

Severe Combined
Immune Deficiency



Russell Witek

Leukemia

Special Friends of the St. Louis Cord Blood Bank



Dr. Donna Wall, MD

*Turned a great idea into
a wonderful reality.*



The Ritters & Lisa Leonard

*In 1998, Lisa Leonard's Poker
Run joined the Ritter family's
Fish Fry that started in 1996.
Both are annual events held in
memory of Anthony Ritter with
proceeds going to Cardinal
Glennon Children's Medical
Center and the St. Louis Cord
Blood Bank.*



Melissa Fallon, Chris Zuckerman, Mollie Forsch and Ellen Port

*Came up with the idea of the 1st Gift Golf Tournament,
a fund raiser that is now in its 15th year.*



*Awarded us a grant of \$50,000
that made it possible
for us to get started.*



*3662 Park Avenue
Saint Louis, Missouri 63110
314.268.2787 • 888.453.2673
www.slcbb.org*